



DISASTER
RESILIENT
AUSTRALIA



Government
of South Australia



SES
RESCUE

Emergency Management News

April 2020

SOUTH AUSTRALIA'S DISASTER RESILIENCE NEWSLETTER



Photo courtesy of Elizabeth Maplettoft



Photo courtesy of Andrew Daniel



Photo courtesy of Stephen Brewster

Highlights In This Issue:

- Royal Commission into the national bushfires
- Keelty Review
- Seasonal outlook
- COVID-19
- Resilient Australia Awards
- Climate change Initiatives
- Upcoming grants

ROYAL COMMISSION

The Royal Commission into the national bushfires arrangements will be going ahead despite of limitations due to COVID-19. Initial submissions are complete, with round one of the Royal

Commission hearings completed from 25 May - 4 June which focused on:

- The changing global climate and natural disaster risks.
- The impact of the 2019-20 bushfires on communities, and the built and natural environments.
- Responsibilities of the Commonwealth in relation to natural disaster arrangements.

Further information can be [found here](#).

Daily summaries provided by Attorney Generals Department can be found in [MS Teams](#).



Each decision and action makes us more vulnerable to disasters – or more resilient to them.
Thus disaster risk reduction involves every part of society, every part of government, and every part of the professional and private sector." United Nations International Strategy for Disaster Reduction.



DISASTER
RESILIENT
AUSTRALIA



Bushfire Impact data 2019/2020 from Keelty Review

KEELTY REVIEW

In the summer of 2019-20 bushfires devastated many parts of South Australia and resulted in the loss of three lives. In January 2020 the South Australian Premier, the Hon. Steven Marshall MP, and South Australian Minister for Police and Emergency Services, the Hon. Corey Wingard MP announced an Independent Review to assist in planning for the 2020-21 fire season. The fires at Duck Ponds Port Lincoln (Nov 2019); Yorketown (Nov 2019); Adelaide Hills (Cudlee Creek Dec 2019); Kangaroo Island (Dec 2019); Miltalie (Dec 2019) and Kellira (Dec 2019) were the focus. The report was released in July 2020 and can be [accessed here](#).

SEASONAL OUTLOOK

The Seasonal Outlook for the upcoming season – BoM reports that this year will be wet and can expect some intense rainfall and storm activity similar to the year 2016 when we had a state wide blackout for quite a substantive period. A presentation given by SES – operational preparedness, DEW – Operational preparedness, BoM – seasonal forecast, SA Housing Authority regarding Code Blue response and MFS regarding communications (000 and 132500 surge) at the State Emergency Centre (SEC) last week is [attached here](#).



Each decision and action makes us more vulnerable to disasters – or more resilient to them. Thus disaster risk reduction involves every part of society, every part of government, and every part of the professional and private sector." United Nations International Strategy for Disaster Reduction.



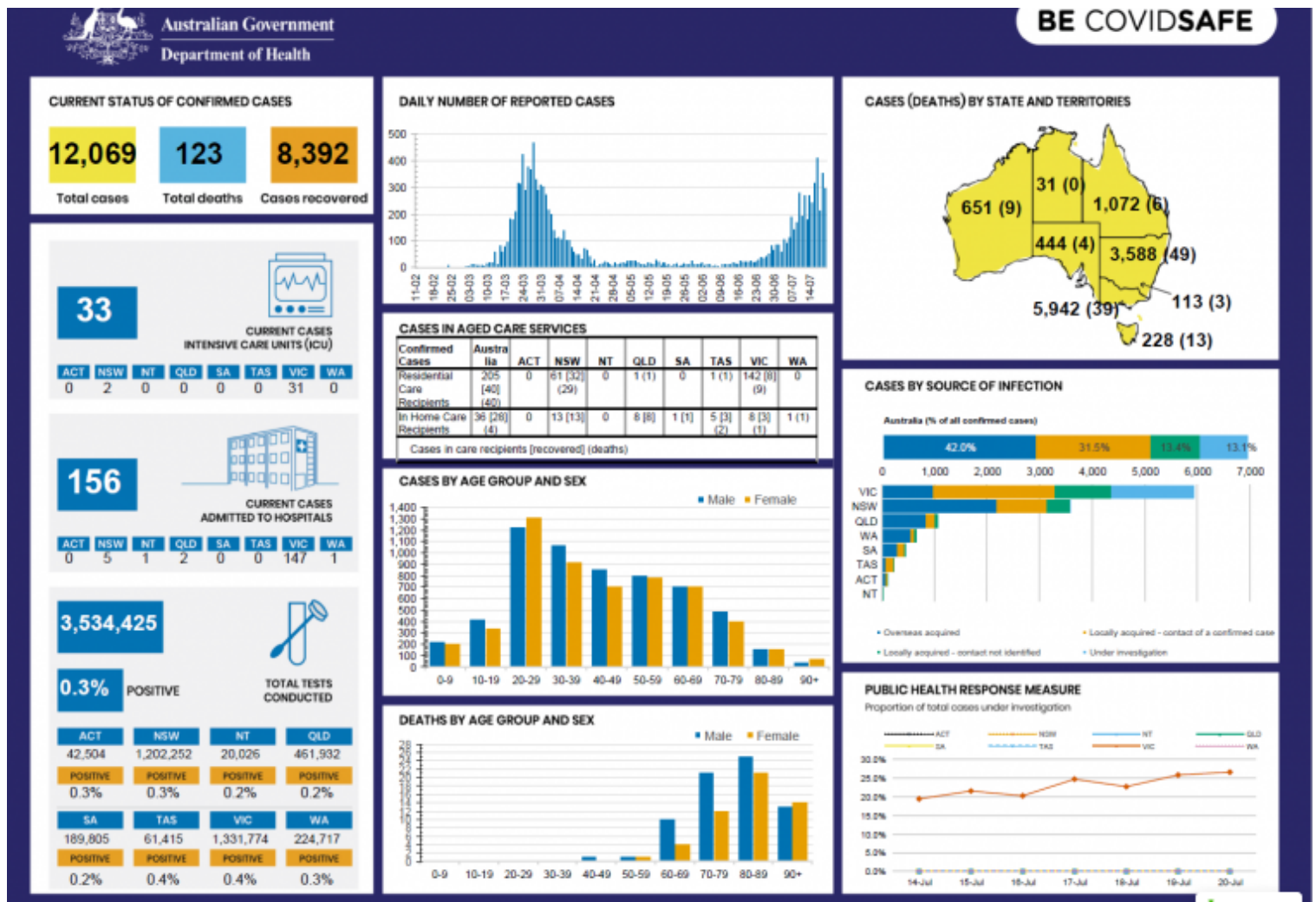
**DISASTER
RESILIENT
AUSTRALIA**



Government
of South Australia



RESCUE



COVID-19

National -

COVID-19 app and Whatsapp instructions features are available on the [National Health website](#).

State - State arrangements with COVID-19 (SEC activated, several ZESTs activated, SA Health IMT and EMT (which is where nearly 50+ other state government agencies staff are assisting SA Health in managing the event), State Declaration extended, LGA Involvement in SEC.

[Covid-19 Latest updates SA Health](#)
[Emergency Declaration](#)

Emergency Services continues to develop and implement new policies and procedural arrangements to mitigate risk and establish business continuity arrangements for the COVID-19 emergency. The SASES Outbreak Coordination Team is working closely with CFS, MFS and SAFECOM to develop and publish 'Best Practice Guides' to deal with arrangements or practices that impact upon more than once agency. The SASES Outbreak Coordination Team is also working on developing agency policies, procedures, training, recruitment and communication to volunteers and staff required due to the altered arrangements because of COVID-19.

