



Floods

South Australian State Emergency Service



Easy English



**Government
of South Australia**



RESCUE

Hard words



This book has some hard words.

The first time we write a hard word

- the word is in **blue**
- we write what the hard word means.

You can get help with this book



You can get someone to help you

- read this book
- know what this book is about
- find more information.



About this book

This book is by the South Australian State
Emergency Service.



We are also called the SA SES.



This book tells you how to stay safe when
there is a flood.



You might see the flood warning

- in newspapers



- on TV



- in posters

- on the SES website



- on Facebook



- on Twitter.

Warning levels

There are 3 warning level symbols

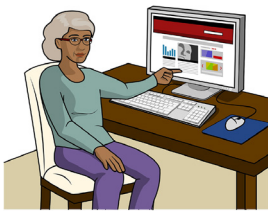


1. The **Advice** symbol means

- there might be a flood that could get worse



- you are **not** in danger yet



- you should check for new information often.



2. The **Watch and Act** symbol means

- the flood is more serious than before



- you might be in danger

1	_____
2	_____
3	_____
4	_____

- you should start to plan next steps in case the flood gets any worse.

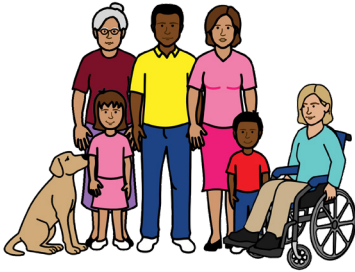


3. The **Emergency Warning** symbol means

- there is a serious flood



- you are in danger



- you should follow your plan and stay safe.

5 steps to prepare for a flood



1 Find out if floods are common in the area you

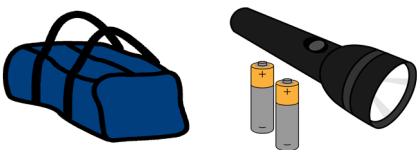
- work
- live
- plan to visit.



2 Know where the safe areas are, and how to get there safely.



3 Keep a list of emergency contacts.



4 Make an emergency kit including

- battery powered radio
- torch
- spare batteries.



5 Check your home **insurance** is up to date and covers you for a flood.

Home insurance means you

- put small amounts of money away over time
- use the money you saved at a later time if there is an emergency.

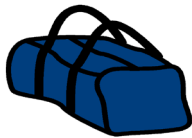
For example, money to fix your window after a storm.

What should you do if you see an emergency warning?

PLAN	
1	_____
2	_____
3	_____
4	_____

If you see a flood emergency warning

- follow your **Home Emergency Plan**
- find your emergency kit
- check on your neighbours.



Home Emergency Plan says what your family will do if there is a flood.

Prepare your home



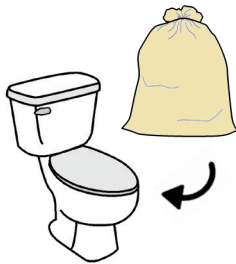
To prepare your home, you can

- put electrical items on tables and benches

- put important items on tables and benches

- tie things down so they **cannot** float.

For example, plastic furniture or a BBQ.



- block toilets and drains with sandbags to stop sewage backflow.



Check the news for information, updates and tips to stay safe.

What should you do if there is a flood?



If there is a flood you should

- **never** drive, ride or walk in floodwater.

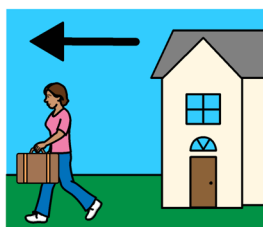


- contact your neighbours



- check the news

- be ready to **evacuate**.



Evacuate means leave your house until it is safe to be at home again.

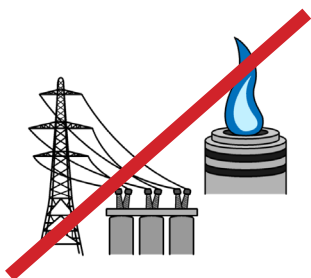
It is safe to act early in a flood because roads can close when the flood gets worse.



Always listen to emergency services for help to stay safe in a flood.

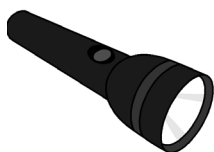
What should you do when you get home after a flood?

When you get home after a flood there are things you must do to be safe.



When you get home from a flood

- turn electricity and gas **off** before you go inside the house



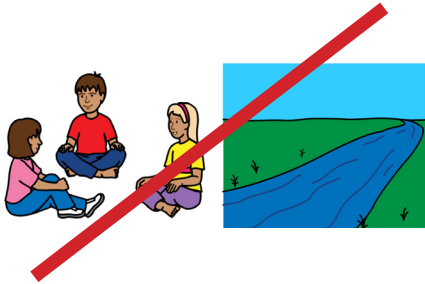
- use a torch to look through the inside of your house



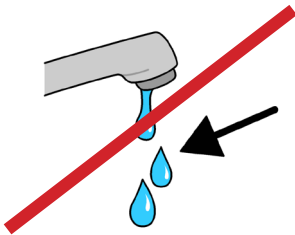
- look for damage to the windows, walls and roof

When you get home after a flood there are things you should **not** do.

For example,



- do **not** let children play in or near floodwater



- do **not** drink tap water until health experts tell you it is safe



- do **not** use gas or **electrical appliances** until they are checked for safety.

Electrical appliances are things you use in your home that plug into power such as



- kettle

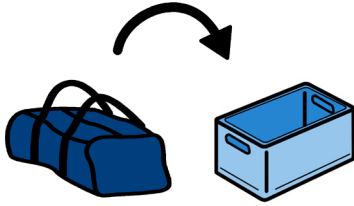


- iron

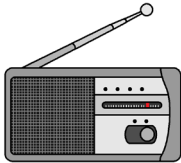


- hair dryer.

Emergency kit checklist

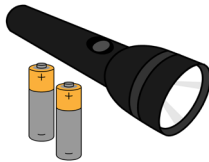


You can save time in an emergency if you already have an emergency kit packed.

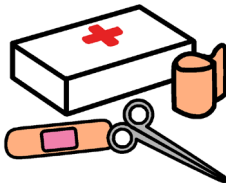


Check your emergency kit includes

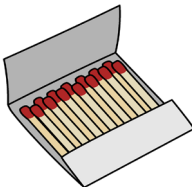
- battery powered radio with spare batteries



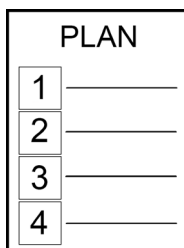
- battery powered torch with spare batteries



- first aid kit



- candles and waterproof matches



- important papers with contact numbers

- a copy of your Home Emergency Plans

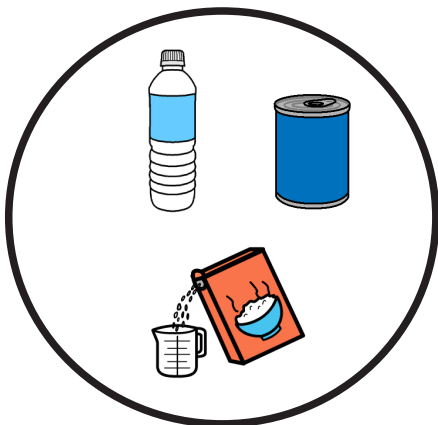
- waterproof bag for important items.

When you are ready to leave your house, add

- phone and charger
- medications
- clothing and strong shoes
- special things your family might need
- toiletries such as soap and a toothbrush

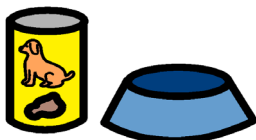


- **prescriptions**
- **non perishable food** and drinking water.



Prescriptions are notes from the doctor that let you get medicine.

Non perishable food means food that will **not** go off.

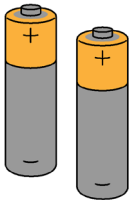


If you have pets don't forget their leads, food and bowls.



Tips

- keep a list of emergency contacts nearby
- keep your emergency kit in a waterproof box



- make sure everything in the kit is up to date.
For example, check batteries do **not** expire.



More information

For more information about floods contact the State Emergency Service of South Australia.



In a serious emergency

Call **000**



More help in an emergency

Call **132 500**

More information

Call **1800 362 361**



Website ses.sa.gov.au

© Scope (Aust) Ltd. You may use this document for your own personal, non-commercial purposes only. You must not use the document for any other purpose and must not copy, reproduce, digitise, communicate, adapt or modify the document, or any part of it, (or authorise any other person to do so) without the prior consent of Scope (Aust) Ltd.

Scope's Communication and Inclusion Resource Centre wrote the Easy English in March 2019. www.scopeaust.org.au
Call 1300 4 72673. To see the original contact the Government of South Australia.

The Picture Communication Symbols © 1981-2010 by Tobii Dynavox.

All Rights Reserved Worldwide. Used with permission.

ClipArt © Inspired Services, UK. www.inspiredservices.org.uk

Change People © 2011. www.changepeople.org

